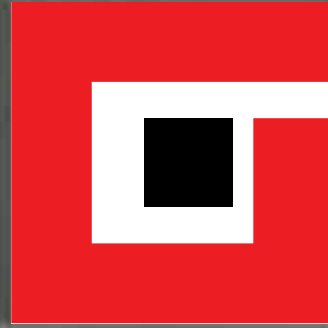


**PETER  
GROSS  
BAU**



B U I L D I N G T H E F U T U R E → S I N C E 1 8 8 5



B U I L D I N G T H E F U T U R E → S I N C E 1 8 8 5

An assortment of projects realized by Peter Gross Construction Group in Saarbrücken

**Building construction**

- 1 Industrial buildings
- 2 Commercial buildings
- 3 Office buildings
- 4 Shopping centres
- 5 Hotel
- 6 Retirement home
- 7 Clinic
- 8 Residential buildings
- 9 Sewage treatment plant
- 10 Bridge
- 11 Power station
- 12 Multi-storey car park
- 13 Factory workshop
- 14 High-bay warehouse

**Underground construction**

- 15 Road construction
- 16 Earthwork
- 17 Rail construction
- 18 Water engineering
- 19 Pipeline construction
- 20 Sewer line construction
- 21 Car park
- 22 Sports ground
- 23 Mastic asphalt

**Production**

- Prefabricated components plant
- Ready-mixed concrete
- Asphalt
- Mastic asphalt
- Sand pit
- Gravel
- Chips
- Landfill
- Limestone





State Capital  
Saarbrücken

As a family business with a workforce of around 800, we offer reliability and the expertise that has been acquired in the course of four generations of an experienced, medium-sized construction business, combined with the flexibility and innovation of a dynamic and modern construction company.

Our wide range of performances and services comprises all areas of surface and underground construction and is supplemented by comprehensive building, raw and recycled materials activities. As a highly efficient, integrated group that specializes in every field, we are ideally equipped to meet any challenges the construction world has to offer. With our branches, subsidiaries and associated companies, we have our roots in the south of Germany, from where we maintain close contacts to our customers all over



Philipp P. Gross

Steffen Walter

the country through our construction projects. Our motivated employees strive constantly to achieve common goals fairly and reliably in collaboration with our partners. Continuous further training and the willingness to adopt state-of-the-art technological and business developments have ensured our status as one of the most competitive and efficient companies in the construction sector for over 125 years. Our many long-standing business relationships and nationwide reputation are ample proof that Peter Gross Construction Group fulfils the expectations placed on a modern construction company.

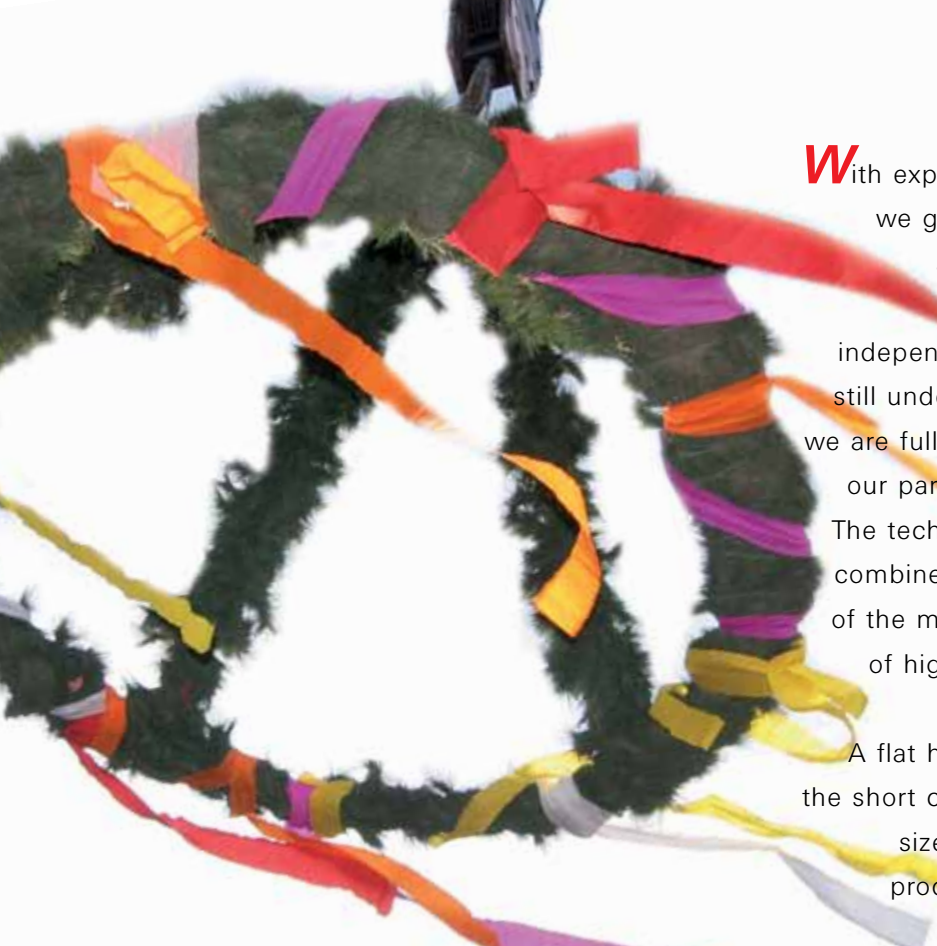
Allow us to convince you of our capabilities too. We look forward to meeting the challenges of the future!

*The Management*



**Head Office  
St. Ingbert**

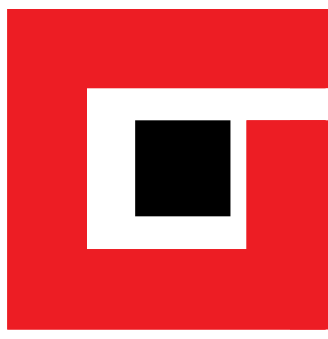




**W**ith expertise and state-of-the-art technology, we guarantee quality and punctual delivery at a reasonable price. Our high quality standards are checked regularly by independent quality associations. Because we still undertake construction projects ourselves, we are fully aware of the needs and concerns of our partners during the construction process. The technical skills of our 500 skilled workers, combined with our experience and knowledge of the management, coordination and logistics of highly complex building projects, give us enormous flexibility and reliability. A flat hierarchy in the organizational process, the short communication channels of a medium-sized enterprise and clear responsibilities produce quick and unequivocal decisions. We are there when you need us!

Turnover: € 220 million  
 Net assets: € 20 million (> 25 %)  
 Shareholder: Peter Gross Family (100 %)  
 Managing directors: Philipp P. Gross, Grad. Economist (lic. oec.)  
 Steffen Walter, Grad. Engineer (Dipl.-Ing.)  
 Personnel: 800 employees  
 of which 150 engineers  
 500 specialists  
 50 apprentices

# PETER GROSS BAU

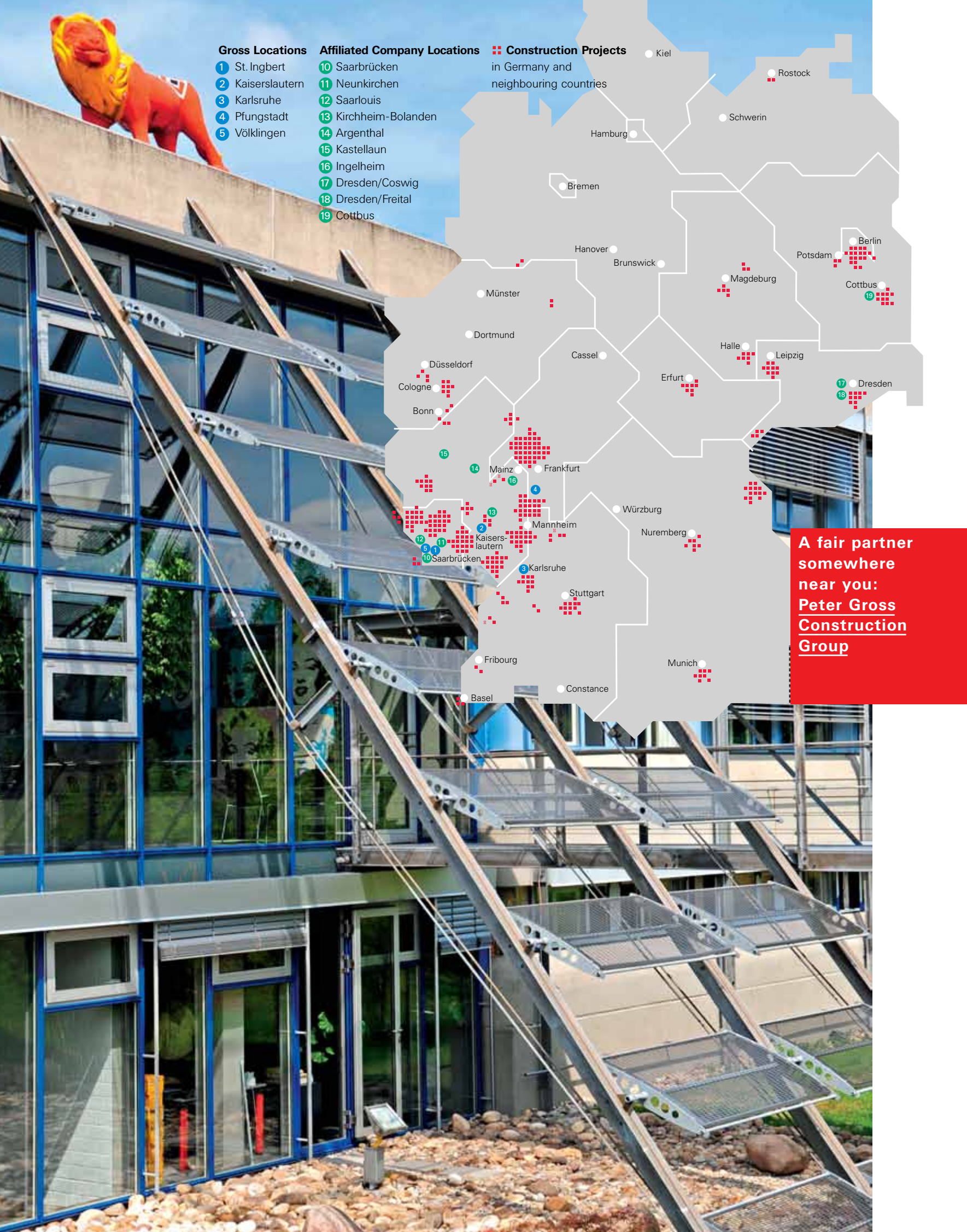


SINCE 1885

BUILDING THE FUTURE

## PETER GROSS CONSTRUCTION GROUP

| Building  | Services                                       | Production   | Abroad  |
|---|--|--|---|
| Peter Gross GmbH & Co. KG<br>Building St. Ingbert | Peter Gross Verwaltungs GmbH<br>St. Ingbert    | GROSS-th-beton GmbH & Co. KG<br>St. Ingbert / Kirchberg  | Geo-BUD - TBM Sp.z.o.o.<br>Zory, Poland         |
| Underground St. Ingbert<br>Kaiserslautern Branch  | Wilhelm Füssler Bau GmbH<br>Karlsruhe          | gth-beton GmbH & Co. KG<br>Coswig / Cottbus              | Peter Gross Polska Sp.z.o.o.<br>Olsztyn, Poland |
| Pfungstadt Branch<br>Karlsruhe Branch             | Bahnbau GmbH<br>Völklingen                     | Teralis GmbH & Co. KG<br>Neunkirchen                     |   |
| Affiliated company                                | Enrotec Holding GmbH & Co. KG<br>Neunkirchen   | AWS Asphaltwerk Saarbrücken GmbH & Co. KG<br>Saarbrücken |   |
|   | Mogat Gussasphalt GmbH & Co. KG<br>Saarbrücken | Reichle Dolomit-Steinwerk GmbH<br>Wallersheim / Eifel    |   |



**Gross Locations**

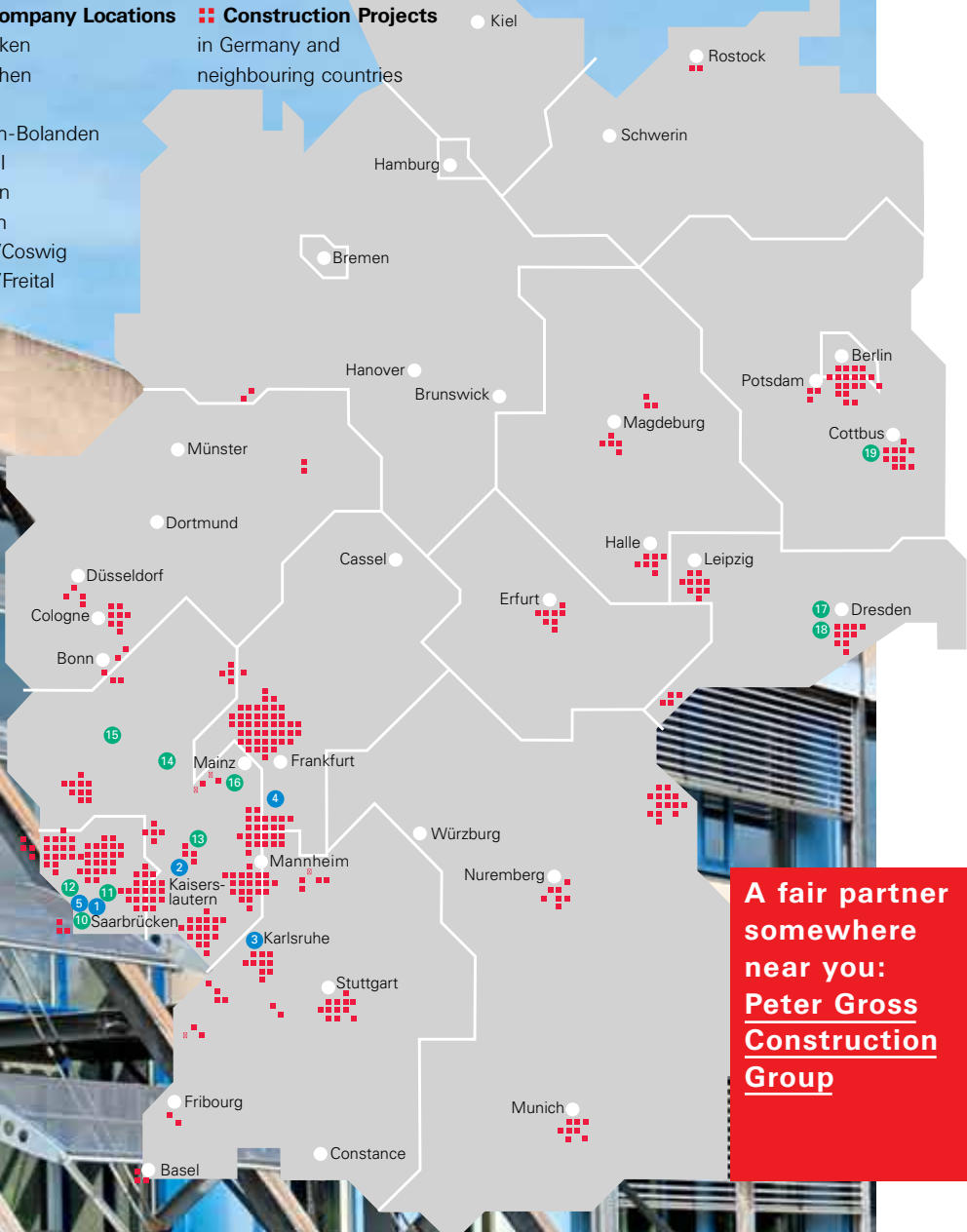
- 1 St. Ingbert
- 2 Kaiserslautern
- 3 Karlsruhe
- 4 Pfungstadt
- 5 Völklingen

**Affiliated Company Locations**

- 10 Saarbrücken
- 11 Neunkirchen
- 12 Saarlouis
- 13 Kirchheim-Bolanden
- 14 Argenthal
- 15 Kastellaun
- 16 Ingelheim
- 17 Dresden/Coswig
- 18 Dresden/Freital
- 19 Cottbus

**Construction Projects**

in Germany and neighbouring countries



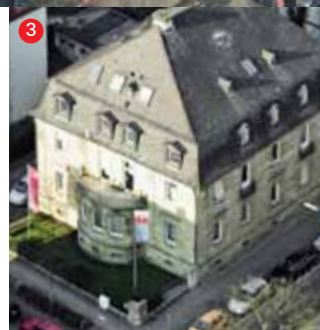
**A fair partner  
somewhere  
near you:  
Peter Gross  
Construction  
Group**



In addition to our extensive product range, our wide network of sites and branches is a further foundation of our company's success. We supply numerous construction projects all over Germany from two large logistics centres. Our modern machinery and fleet of vehicles are maintained in our own workshops. Dedicated resources are also available at any time to provide support at short notice. In this way we can ensure a high level of readiness and short response times, especially when the unexpected happens. Our employees make a decisive contribution towards our success by giving our company an unmistakable image. Day in day out, their commitment, expertise and experience make our tradition-steeped family company what it is: a reliable and capable partner for customers, business partners and suppliers. They are the foundation of our continued success in a constantly changing industry – and have been since 1885!



- 1 Building yard in Pfungstadt
- 2 Karlsruhe/Ettlingen branch
- 3 Füssler, Karlsruhe
- 4 Kaiserslautern branch







|          |             |  |    |
|----------|-------------|--|----|
| <b>B</b> | BUILDING    | <b>Civil engineering</b>                     | 8  |
|          |             | <b>Prefabricated components</b>              | 10 |
|          |             | <b>Industrial construction</b>               | 12 |
|          |             | <b>Turnkey construction</b>                  | 14 |
| <b>G</b> | GENERAL     | <b>General contractor</b>                    | 16 |
|          |             |  |    |
| <b>U</b> | UNDERGROUND | <b>Road and asphalt construction</b>         | 20 |
|          |             | <b>Sewer line construction and earthwork</b> | 22 |
|          |             | <b>Pipeline construction</b>                 | 24 |
|          |             | <b>Track laying</b>                          | 26 |
| <b>P</b> | PRODUCTS    | <b>Building materials</b>                    | 28 |
|          |             | <b>Raw and recycled materials</b>            | 30 |
|          |             | <b>History</b>                               | 32 |
|          |             | <b>Addresses</b>                             | 34 |
|          |             | <b>Certificates</b>                          | 35 |

8

# *Civil Engineering*

Craftmanship at its highest level:  
civil  
engineering by  
Peter Gross  
Construction  
Group





Our workforce optimizes project times, prices and quality by means of the latest methods and systems. This is where the decades of training undertaken by our specialist staff comes into its own. Supported by state-of-the-art technology, our in-house design office plans and creates special designs at the highest level for all fields of

constructive civil engineering. This is the perfect answer to special technical challenges – and it can also be accomplished within extremely short planning deadlines when necessary.

- Reinforced concrete construction
- Masonry construction
- Wood construction
- Steel construction
- Design office
- Structural analyses



# B Prefabricated Components

Speed and quality: prefabricated components by Peter Gross Construction Group





- Stanchions
- Girders
- Transoms
- System construction
- Solid walls
- Sandwich walls
- Facing formwork
- Special components
- Balconies
- Stairs
- Drain pans in accordance with Art.19 I of the German Water Resources Act (WHG)

**B**uilding with Gross prefabricated components offers a whole series of benefits: vast experience in production with top quality and efficiency, as well as the greatest possible flexibility in practical applications. Short construction times can be guaranteed reliably thanks to the modular construction system. Technical and physical construction requirements, such as fire

protection, soundproofing, heat insulation and individual surface designs are easy to realize and make prefabricated components the first choice, even for complex building projects.



# **B** *Industrial Construction*

**More leeway  
for productivity:  
industrial  
construction by  
Peter Gross  
Construction  
Group**





- **Factory workshops**
- **Machinery foundations**
- **Production plants**
- **High-bay warehouses**
- **Special buildings**
- **Annual contracts**



Our specialists, who open up new growth possibilities to customers from commerce and the manufacturing industry by undertaking extensions, conversions and new buildings designed precisely to customer requirements within a very short time, are always available at short notice and are prepared to work around the clock when necessary. Customers also benefit

from our wide range of services and high capacities, particularly with construction projects that run without interrupting operations and have a minimal effect on business processes.



# **B** Turnkey Construction

Everything from  
a single source:  
turnkey  
construction  
with the  
Peter Gross  
Construction  
Group







- All trades
- Fixed, flat rate
- Quality guarantee
- On-time delivery
- Project management
- Coordination
- Planning



"Everything from a single source" is our motto with turnkey construction. Our experienced workforce and trusted partners from a wide range of trade sectors guarantee the high quality of our building projects. Add to this time savings and the advantage of secure prices. Our customers have a single, competent point of contact throughout the entire construction

process. With all of the convenience of turnkey construction, customers are in the very best hands with Peter Gross Construction Group.



# **G** *General contractor*

**Perfect teamwork: Peter Gross Construction Group as a general contractor**



**A**s a general contractor, we show what we are capable of when it comes to the noble art of erecting a building. In addition to technical construction aspects, our know-how comprises the management, coordination and logistics of highly complex construction projects which are completed ready for use – including planning, if desired. The advantage to our customers is

perfect support at every stage of the project, beginning with optimized project management by experienced project managers, through professional implementation of the construction project, including the efficient link-up of everyone involved in the construction process, to support during the warranty period. You can always rely on Peter Gross Construction Group

- Office buildings
- Shopping centres
- Hospitals
- Laboratories
- Retirement homes
- Hotels
- Residential construction
- Community and public buildings
- Logistics centres





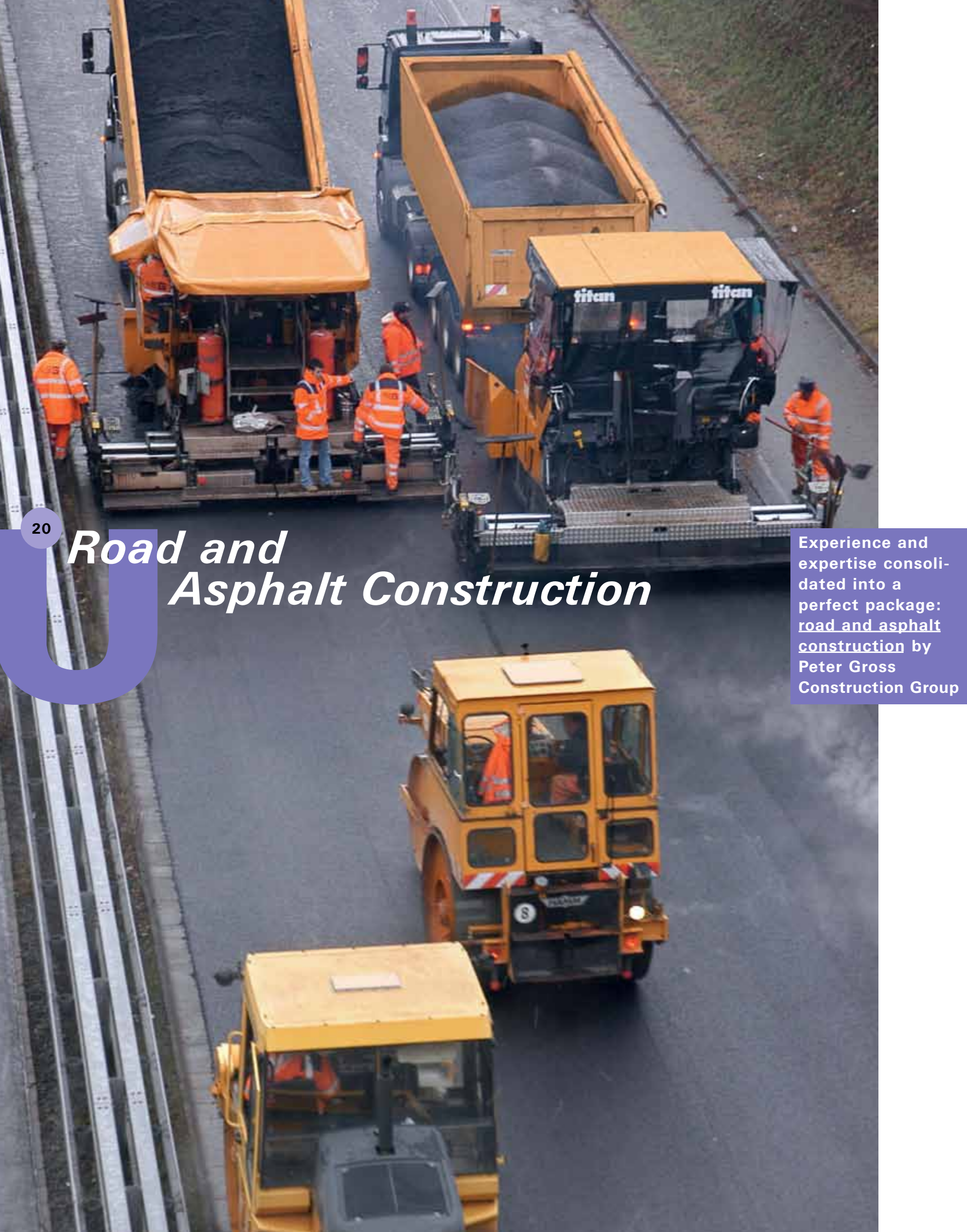
# G





# *Road and Asphalt Construction*

Experience and expertise consolidated into a perfect package: road and asphalt construction by Peter Gross Construction Group





**C**omprehensive technical knowledge, modern machinery and the high level of motivation and commitment of our workforce have turned us into a highly regarded contractor for both public and private customers. When we get to work, we complete the entire structure, from soil improvement to surfacing. We also make the base, binder and surface

courses with a very special ingredient - years of experience. The result: reliable, hard-wearing and highly cost-effective asphalt and special coverings.

- Traffic route construction
- Asphalt construction
- Concrete road construction
- Mastic asphalt
- Landfill sealing
- Property development
- Car parks
- Airports





22

# *Sewer Construction and Earthwork*

Creating internal value:  
sewer construction and earthwork by  
Peter Gross Construction Group

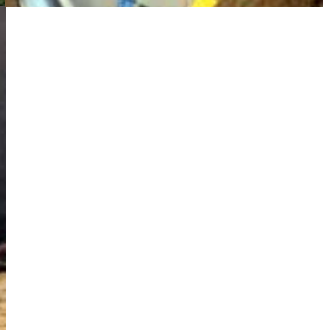




**A** modern infrastructure is the indispensable backbone of progressive and productive regions. Our qualified experts provide the necessary basis for this. All work in the field of public supply and disposal is subject to the most stringent internal and external monitoring. Decades of experience, well-practised teams and state-of-the-art

technical equipment help us to master even the most difficult tasks. Our customers have always trusted our competence and valued our reliability and we aim to maintain this in the future too.

- Sewer and wastewater plants
- Sheet piling and pit lining work
- Collectors
- Sewage treatment plants
- Water engineering
- Ground levelling
- Noise control
- Retention basins





# *U Pipeline Construction*

Combining energy: pipeline construction by Peter Gross Construction Group



**T**wo hundred employees, highly specialized in pipeline construction, make Peter Gross Construction Group and its affiliated company a competent and reliable partner for public utilities providers, power and water suppliers and wastewater disposal companies in the southwest of Germany – so much so that their know-how and experience are in demand throughout

the country, as well as in neighbouring Luxembourg. With our own sites in Neunkirchen, St. Ingbert, Saarbrücken and Frankfurt am Main, we offer our customers comprehensive service concepts, as well as the advantages of close proximity. Competence and experience are indispensable foundations for a strong partnership in this sensitive construction field.

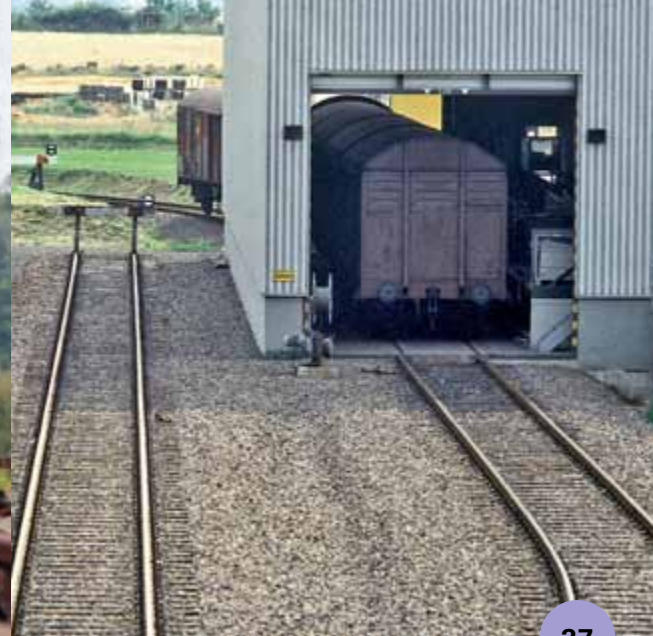
- Pipeline construction (G1 + W1)
- District heating (FW1)
- Underground cables (GZ 962)
- High pressure
- Gas plant construction (G493 1+2)
- Wastewater technology
- Water technology
- Plant engineering
- Control systems technology





# *Railway Construction*

A touch more flexible:  
railway construction by  
Peter Gross  
Construction  
Group



The construction and conversion of railway routes places high demands on the precision and reliability of the people carrying out the construction work. With the aid of modern railway construction technology, our knowledgeable experts always ensure the right connection – be it in track laying, permanent way or crane rail construction projects.

Conversion work usually takes place while the railway is still in operation, which means that the highest levels of safety and caution are essential. Our most highly trained employees guarantee you a speedy and unproblematic construction process. You can count on us as a skilled and competent partner who is always there when needed.

- Track laying
- Permanent way construction
- Crane rail construction



# **D** *Building Materials*

Always the perfect mixture:  
building materials by  
Peter Gross  
Construction  
Group





No matter whether concrete, asphalt or mastic asphalt is required, ultra-modern, computer-controlled production plants and good service result in high quality, reliable delivery and competent advice. External monitoring by independent materials testing institutes, self-monitoring in our laboratory and the continuous training of our employees on the most recent technological

developments guarantee our customers the optimum building material at all times. With 10 ready-mix concrete plants, as well as our mastic asphalt and asphalt mixing works, we ensure the high availability of our processing capacity while also offering the high-quality building materials produced by Peter Gross Construction Group to customers outside our group of companies.

- Concrete
- Asphalt
- Mastic asphalt



# *Raw and Recycled Materials*

Good for the environment: raw and recycled materials by Peter Gross Construction Group







Sensible handling of valuable resources is a matter of course for us. This means the careful and consistent recycling of building materials and the sustainable and responsible use of the natural raw materials obtained from our own production sites.

In addition to this, excavated soil, building rubble and waste materials are disposed of in an

environmentally correct manner at the company-owned landfill site. The strict observance and monitoring of environmental regulations complies fully with our corporate philosophy and is followed to the letter.

- Dolomite limestone quarrying
- Sand
- Landfill
- Recycling
- Composting
- Blast furnace slag
- Chippings



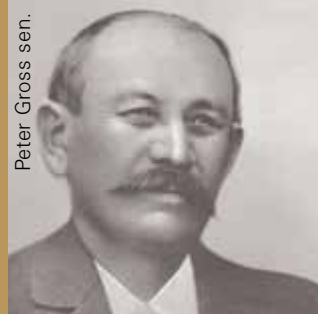
# History

**1885** In 1885, master mason Peter Gross Sr. founded his own company in St. Ingbert in Saarland. Master builder Peter Gross Jr. took over his father's well-established business in 1908. Only six years later, 100 people were employed and the first supra-regional projects were carried out in the neighbouring Palatinate region.

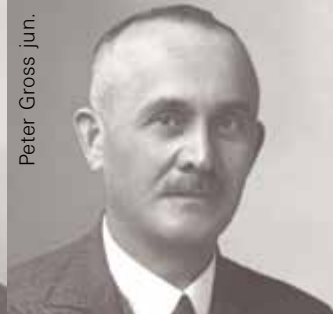
In 1939 the number of employees had grown to 350. After the Second World War, everything was pointing towards a new start at Peter Gross Construction Group too. Graduate engineer (Dipl.-Ing.) Ottmar P. Gross, son of the company proprietor and grandson of the founder, joined the company in 1950. He soon advanced the supra-regional development of the construction group by expanding fields of activity and making targeted acquisitions. In 1973, continued growth made it necessary to expand the board of directors, whereupon Business Administration graduate

**A successful path to the future: the history of Peter Gross Construction Group**

Peter Gross sen.



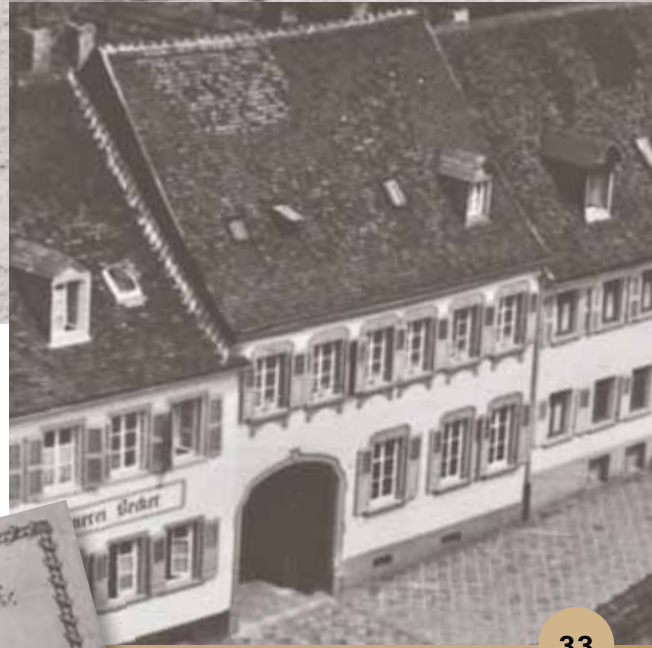
Peter Gross jun.



(Dipl.-Kaufm.) Klaus J. Heller was brought on board to strengthen the company management. With graduate economist (lic. oec.) Philipp P. Gross, son of Ottmar P. Gross, the fourth generation joined the board of directors of the family business in 1994. The years after the reunification boom were used to consolidate the Peter Gross Construction Group's position as a reliable and competent construction partner throughout Germany. In 2000, graduate engineer (Dipl.-Ing.) Steffen Walter joined the board of directors. Klaus J. Heller left the company in 2005 after 34 successful years. Today the family business employs a workforce of 800, of whom 150 are engineers and 50 trainees. In recent years a turnover of over 200 million euros has been generated regularly. This means that Peter Gross Construction Group has been one of Germany's largest medium-sized construction companies for more than 125 years.

**2010**

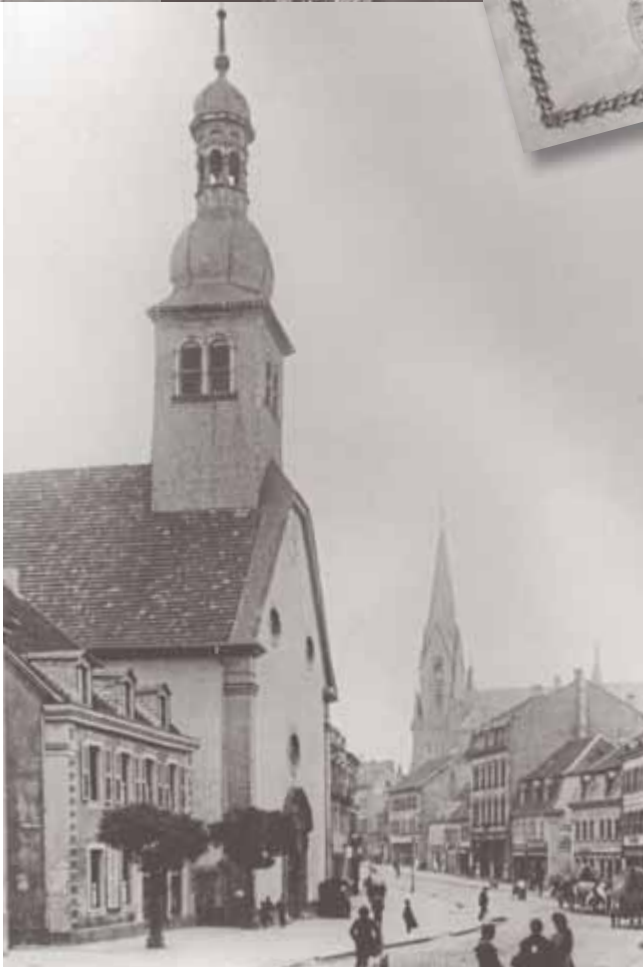
125 YEARS



Ottmar P. Gross



Klaus J. Heller





**Peter Gross GmbH & Co. KG**

Dudweilerstrasse 80  
66386 St. Ingbert  
Fon 06894-15 0  
Fax 06894-15 219

**Kaiserslautern Branch**

Merkurstrasse 3a  
67663 Kaiserslautern  
Fon 0631-35 167 0  
Fax 0631-35 167 19

**Pfungstadt Branch**

Darmstädter Strasse 119  
64319 Pfungstadt  
Fon 06157-94 690  
Fax 06157-7741

**Karlsruhe Branch**

Am Hardtwald 4  
76275 Ettlingen  
Fon 07243-605 84 0  
Fax 07243-605 84 19



**Peter Gross Bau GmbH**

Dudweilerstrasse 80  
66386 St. Ingbert  
Fon 06894-15 600  
Fax 06894-15 609



**Peter Gross Fertigteilwerk GmbH**

Dudweilerstrasse 80  
66386 St. Ingbert  
Fon 06894-15 340  
Fax 06894-15 349



**Peter Gross Verwaltungs GmbH**

Dudweilerstrasse 80  
66386 St. Ingbert  
Fon 06894-15 0  
Fax 06894-15 219



**ABS ABS Albert Baubetreuungs GmbH**

Dudweilerstrasse 80  
66386 St. Ingbert  
Fon 06894-15 0  
Fax 06894-15 219



**Bahnbau GmbH**

Saarwiesenweg 6  
66333 Völklingen  
Fon 06898-290 20  
Fax 06898-290 299



**Teralis GmbH & Co. KG**

Grubenweg 95c  
66538 Neunkirchen  
Fon 06821-904 73 0  
Fax 06821-904 73 19



**NSW Neunkircher Schotterwerk GmbH & Co. KG**

Saarbrücker Strasse  
66538 Neunkirchen  
Fon 06821-904 73 0  
Fax 06821-904 73 19



**AWS Asphaltwerk Saarbrücken GmbH & Co. KG**

Saargemünder Strasse 16  
66130 Saarbrücken  
Fon 0681-87 53 25  
Fax 0681-87 47 33



**Wilhelm Füssler Bau GmbH**

Weinbrennerstrasse 18  
76135 Karlsruhe  
Fon 0721-85004 0  
Fax 0721-85004 122



**Enrotec Holding GmbH & Co. KG**

Untere Bliessstrasse 13-15  
66538 Neunkirchen  
Fon 06821-2900 24 0  
Fax 06821-2900 24 99



**Mogat Gussasphalt GmbH & Co. KG**

Neumühler Weg 34  
66130 Saarbrücken  
Fon 0681-88 38 110  
Fax 0681-88 38 120



**Wörschweiler Sand + Deponie GmbH & Co. KG**

Dudweilerstrasse 80  
66386 St. Ingbert  
Fon 06894-15 0  
Fax 06894-15 219



**GROSS-th-beton GmbH & Co. KG**

Dudweilerstrasse 80  
66386 St. Ingbert  
Fon 06894-15 262  
Fax 06894-15 269



**gth-beton GmbH & Co. KG**

Ziegeleiweg 3  
01640 Coswig  
Fon 03523-78 072  
Fax 03523-78 073



**TBM Beteiligungsgesellschaft mbH**

Dudweilerstrasse 80  
66386 St. Ingbert  
Fon 06894-15 0  
Fax 06894-15 219



**Reichle Dolomitsteinwerk GmbH**

Hauptstrasse 6  
54597 Wallersheim  
Fon 06571-147 2816  
Fax 06571-147 2817



**GEO-BUD-T.B.M. Sp.z.o.o**

Ul. Boczna 6  
44-240 Zory  
Poland



**Peter Gross Polska Sp.z.o.o.**

Ul. Kühna 22  
42-256 Olaszyn  
Poland



**DIN EN ISO 9001-2008**  
Quality Management



**EMB Wertemanagement**  
**Bau e.V.**  
Ethics Management



**U.S. Green Building Council**  
Sustainable Building



**AMS Arbeitsschutz mit System –**  
**NLF/ILO-OSH 2001**  
Industrial Safety



**Prequalification**  
Zertifizierung Bau e. V.



Recognized specialists for pipeline construction  
**DVGW GW 301 G1 + W1**  
**DVGW FW 1**  
**GZ 962**  
**DVGW G 493 I and II**



**Quality seal for sewer line construction AK 1**



**Building to protect the environment**



**Specialized company in accordance with Art. 19 I of the German Water Resource Act (WHG)**



**Monitoring of the installation of concrete in monitoring classes 2 and 3 in accordance with DIN 1045-3 and DIN EN 206-1**



**Imprint**   Photos

|   |  |
|---|--|
| Christoph Lison                               | Gatehouse, Westhafen, Frankfurt, on PP 15, 17 and 19                   |
| Roland Halbe                                  | Sixt AG, Pullach, on PP 17 and 19                                      |
| Andrew Wakeford                               | Sewer line construction on P. 23                                       |
| Waldemar Budna                                | St. Josefs-Hospital, Wiesbaden, on P. 17<br>Frankfurt skyline on P. 17 |
| HFV Helikopter-Flug<br>Vermittlung Gödtel GbR | Aerial photographs on PP 1 and 5                                       |
| ATB Thierry                                   | on PP 8, 9, 13 and 29  |
| .A.D.T.                                       | Front page, PP 3 to 36   |
| Torsten Burgmaier                             | <u>Text</u>  |
| .A.D.T.                                       | <u>Concept, Design, Production</u>                                     |
| Stewart Whyte                                 | <u>Translation</u>   |

**Peter Gross**  
**Verwaltungsgesellschaft mbH**

Dudweilerstrasse 80  
66386 St. Ingbert  
Saarbrücken District Court  
Commercial Register:  
HRB 15862  
Managing Directors  
Philipp P. Gross, Graduate  
Economist (lic.oec.)  
Steffen Walter, Graduate  
Engineer (Dipl.-Ing.)





